

LifeWays Board of Directors

**CHIEF EXECUTIVE OFFICER
MARIBETH LEONARD**

Medical Director

**Chief Clinical Officer
Gina Costa**

Access & Crisis Services
Director

Access Supervisor

Crisis Services Supervisor

Crisis Residential Supervisor

Integrated Health Director

Medical Services Supervisor

Outpatient Services Director

Case Management Services
Supervisor

Outpatient Services
Supervisor

Facilities Director

Corp Compliance/Risk
Mgt/Privacy Officer

Recipient Rights Officer

**Chief Financial Officer
Alison Magda**

Executive Director
Human Resources

Human Resources Supervisor

Finance Director

Outpatient Billing Services
Supervisor

Contracts, Provider Network
Management Director

Executive Director
Governance

Safety Management
Administrator

**Chief Operations Officer
Shannan Clevenger**

Executive Director
Information Technology

Communications & Outreach
Director

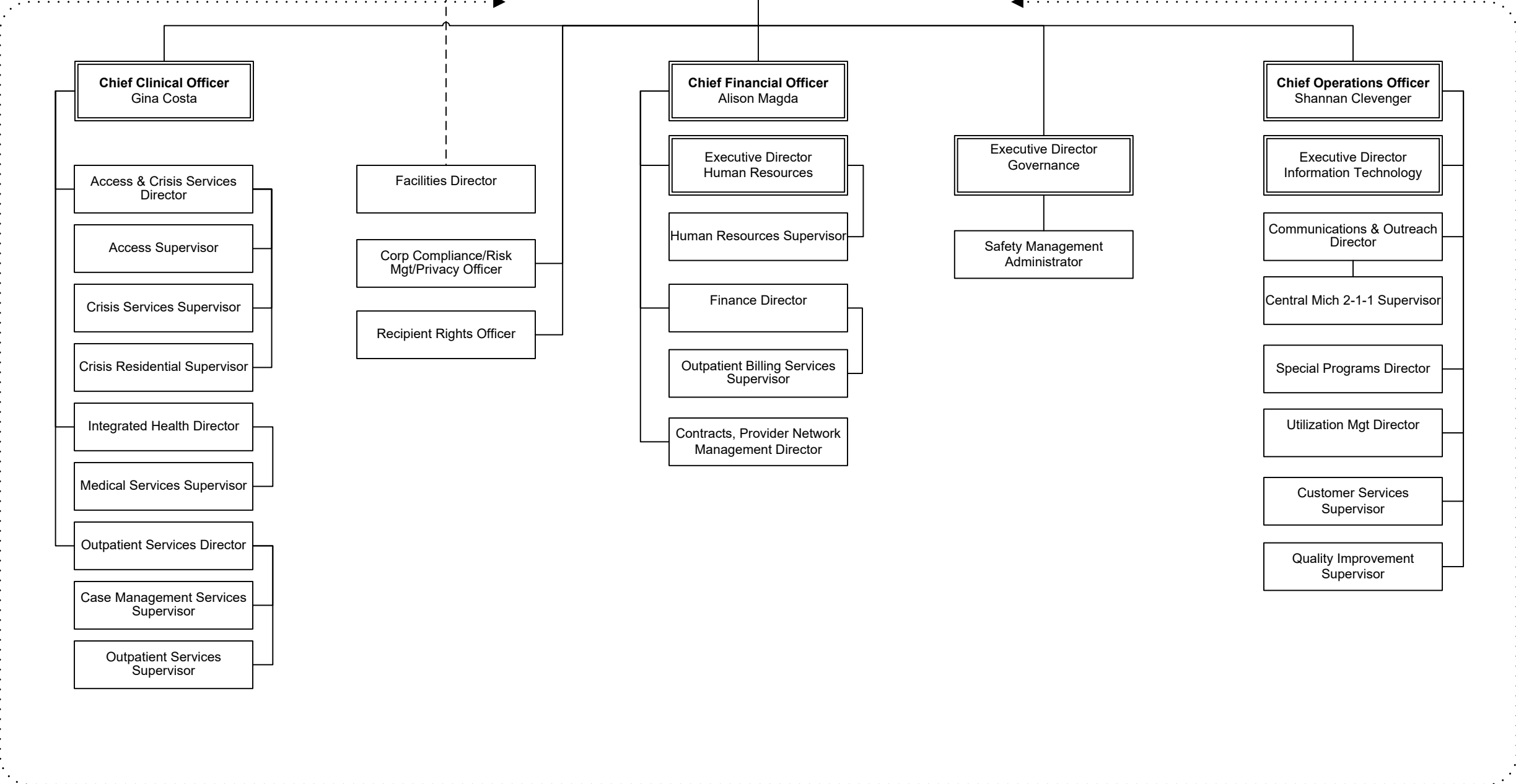
Central Mich 2-1-1 Supervisor

Special Programs Director

Utilization Mgt Director

Customer Services
Supervisor

Quality Improvement
Supervisor



Administrative Services Division

**CHIEF EXECUTIVE OFFICER
MARIBETH LEONARD**

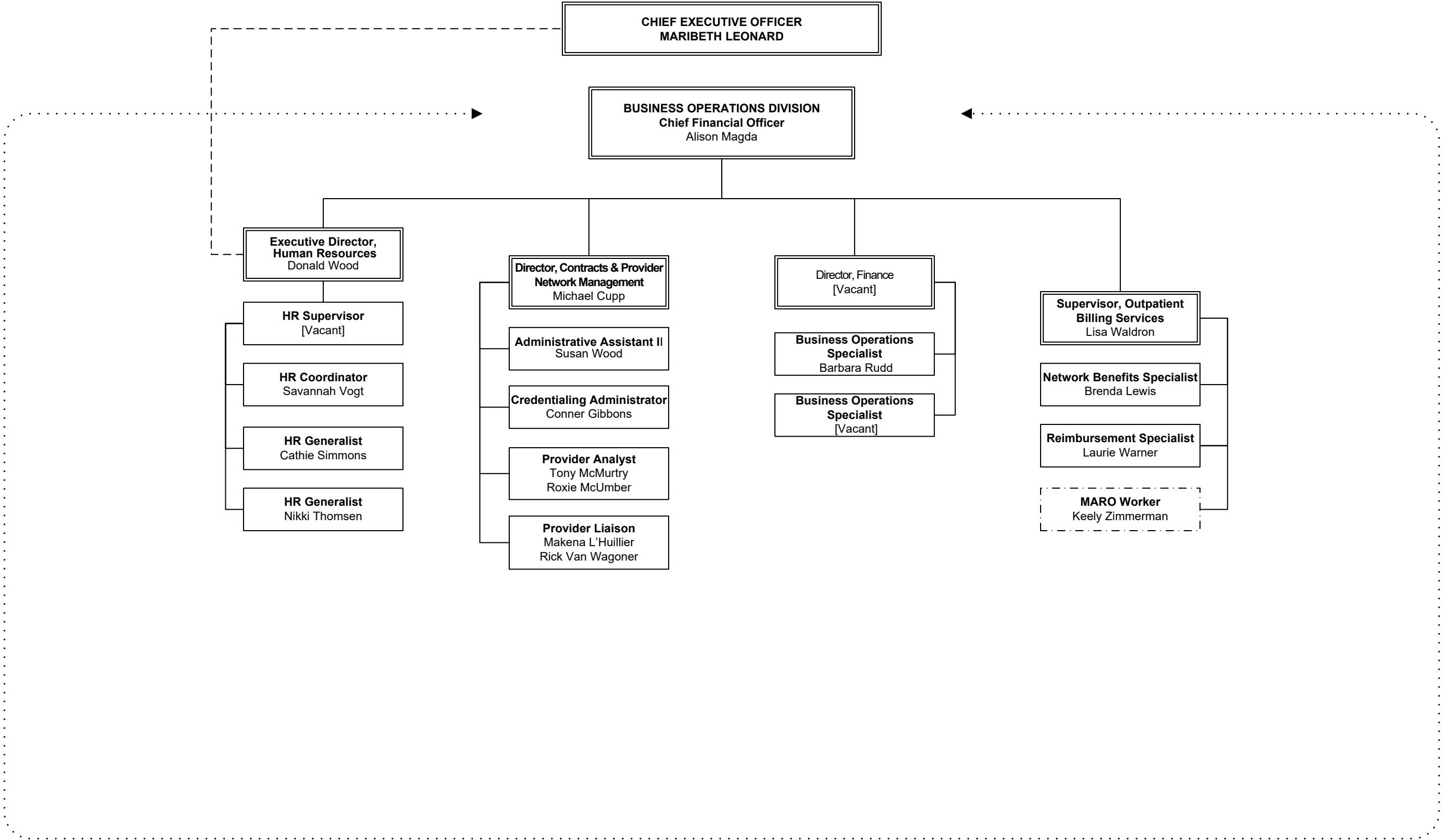
Medical Director
Aleksandra Wilanowski

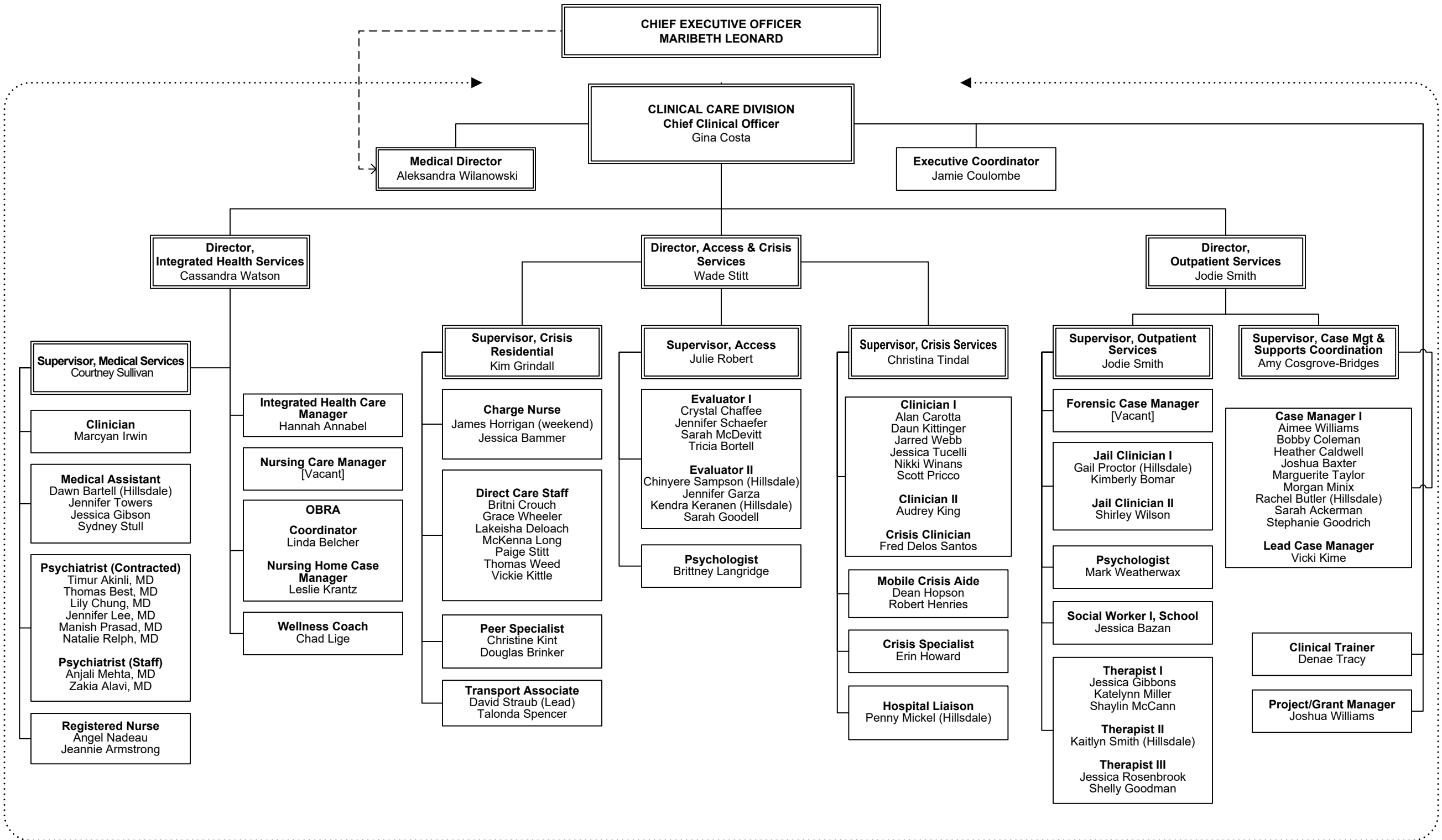
- Recipient Rights Officer**
D'Angela O'Dowd
- Administrative Assistant II**
Audra Hornbeck
- Specialist, Recipient Rights**
Ashlee Griffes
- Specialist, Recipient Rights**
LaShanda Walker

**Corporate Compliance/
Risk Management/
Privacy Officer**
Ken Berger

- Executive Director,
Governance**
Karen Cascaddan
- Administrative Liaison**
Faylawnda Truman
- Executive Coordinator**
Latrell Burk
- Safety Management
Administrator**
Jon Johnston

Facilities Director
Ric Scheele





**CHIEF EXECUTIVE OFFICER
MARIBETH LEONARD**

Executive Coordinator
Casie Robertson

**OPERATIONS DIVISION
Chief Operating Officer**
Shannan Clevenger

Director, Communications & Outreach
Chad Surque

Director, Special Programs
Randy Evans

Director, Utilization Management
David Lowe

Executive Director, Information Technology
Amon Hodge

Supervisor, Central MI 211
Melissa Ladd Patnode

Administrative Assistant I
Diane Walkowicz

Community Navigation Specialist
Barbara Owens
Daniel Garrison
Felicia Parris
Laurie Clemons
Sydney Vernier

Information & Outreach Specialist
Antonio Scott
Carley McAuliffe

Information & Referral Specialist
Angel Fletcher
Dawn Lusby
Evelyn Mercer
James Webb
Kelsie Guy
Kirsten Locke

Quality Assurance & Reporting Specialist
Terry Sharpe

Resource Specialist
Donna Green
LeeAnn Mulligan
Terrina Liogghio

Public Relations Coordinator
Christina Crouch
Chelsea Oliver
Rebecca Calkins

Supervisor, Customer Services
Carly Coxon

Centralized Scheduler
Ashton Dixon

Customer Services Specialist
Teresa Smith

Insurance Verification Specialist
Elizabeth Caldwell

Office Services Support
Andrew Murphy
Lizabeth Taylor (Hillsdale)
Samantha Tylutki
Shelly Rockafellow (Hillsdale)
Wendy Henry

Supervisor, Quality Improvement
Philip Hoffman

EMR Systems Administrator
Alexis Shapiro

EMR Systems Analyst
Holly Paige
Matt Keyes

Quality Improvement Specialist
Cindy Keyes
Jennifer Wireman

Network Clinical Trainer
Kaitlin Burnham

Self Determination Coordinator
Stephanie Justice

Supports Intensity Scale Assessor
Emily Purdey

Utilization Manager
Brittany Bragg
Jennifer Fitch
Joann Przano
Karen Schmitt
Ryan Broughton

PC & User Support Technician
Thomas Tyszko

Systems Engineer II
Hue Vang

Telecommunications Manager
Steven Dunning